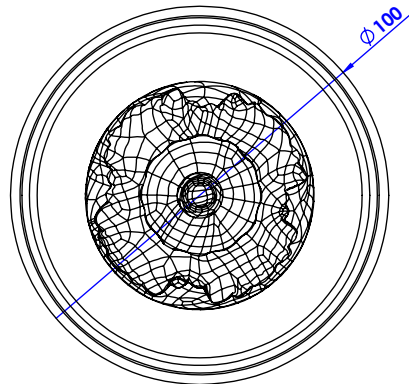
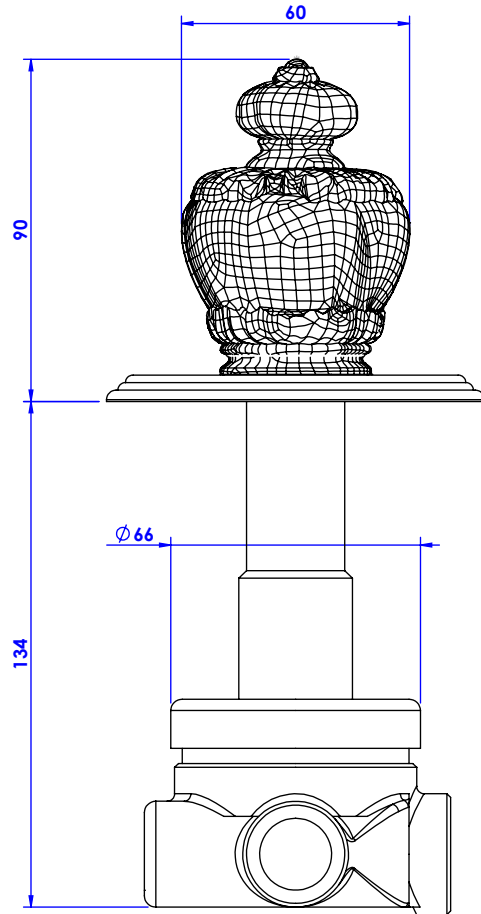


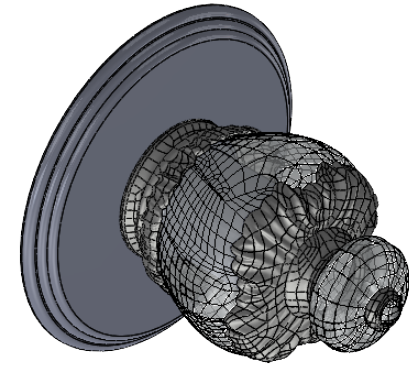
Collection : Valençay

Inverseur 4 voies mural (2 entrées, 2 sorties).

Wall mounted 4-way diverter (2 inlets, 2 outlets).



Ref : S180-344

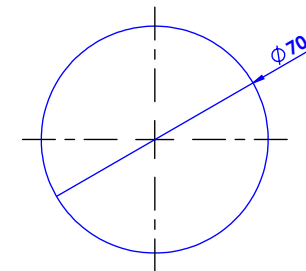


Débit / Flow rate : 34 l/min (sous 3 bars).
Pression maxi / max pressure : 5 bars.

Informations :

Pour les détails de l'inverseur, voir le dessin technique de la partie technique.
For details of diverter, see the technical drawing of the technical part.

Ø de perçage recommandé.
Ø recommended drilling.



serdaneli
PARIS

27/01/2022-1